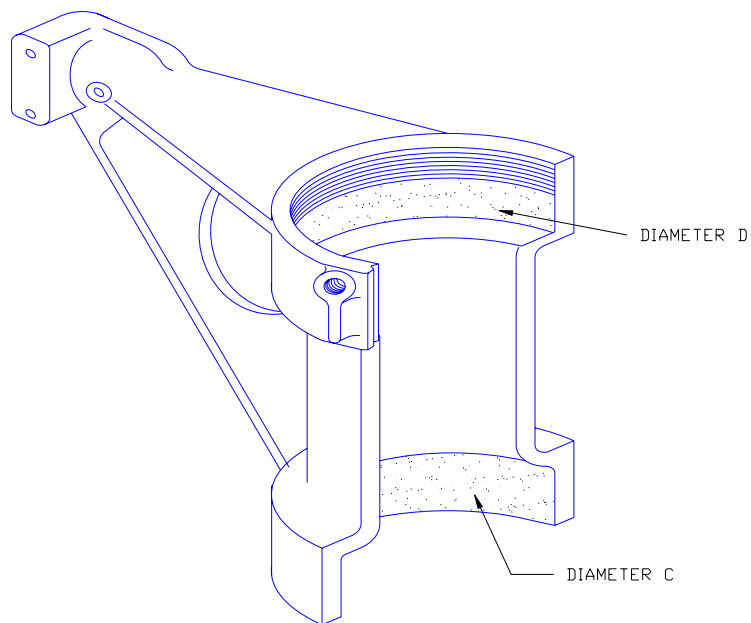
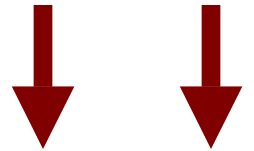




ES12854-1 ES12854-501 OUTER STRUT REPAIR

**SCROLL DOWN FOR
MORE WESTWIND
PARTS AND
CAPABILITIES**



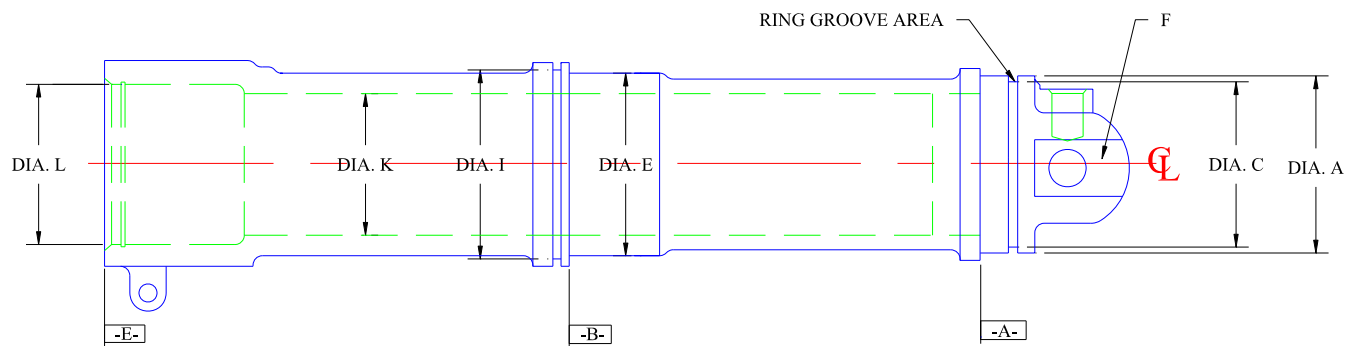
REPAIRS

**DIA C
DIA D**

INSPECTION FEES APPLY



ES12858-501 LANDING GEAR INNER BODY



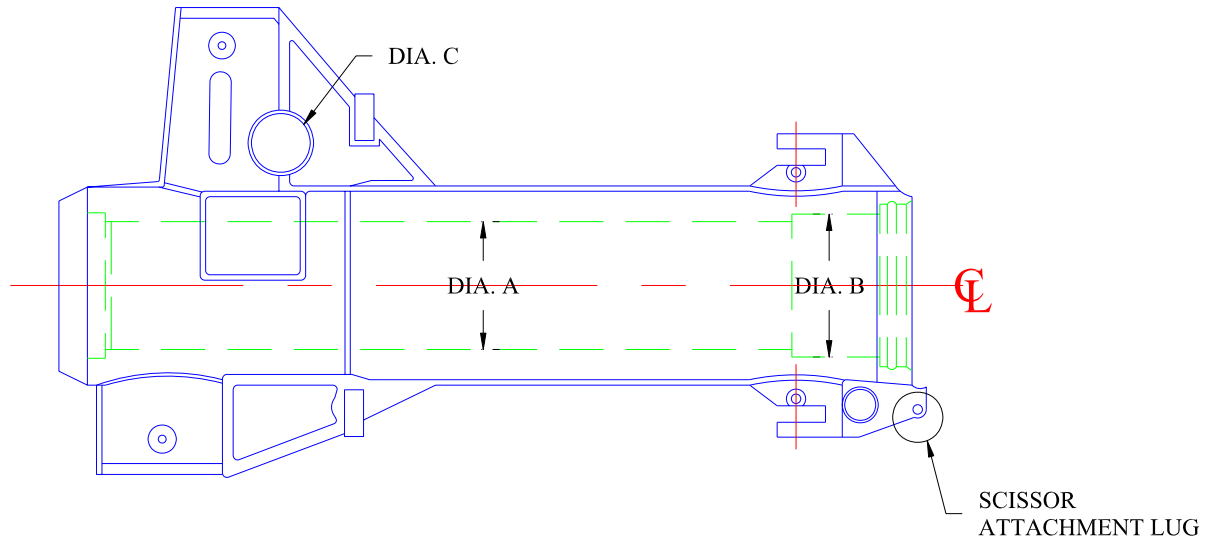
REPAIRS

- DIA I
- DIA E & SFC B
- DIA K
- DIA L
- DIA A & DIA C & O'Ring Groove

INSPECTION FEES APPLY



253505 SERIES LANDING GEAR UPPER BODY



REPAIRS

ATTACHMENT LUG

DIA A

IA B

DIA C

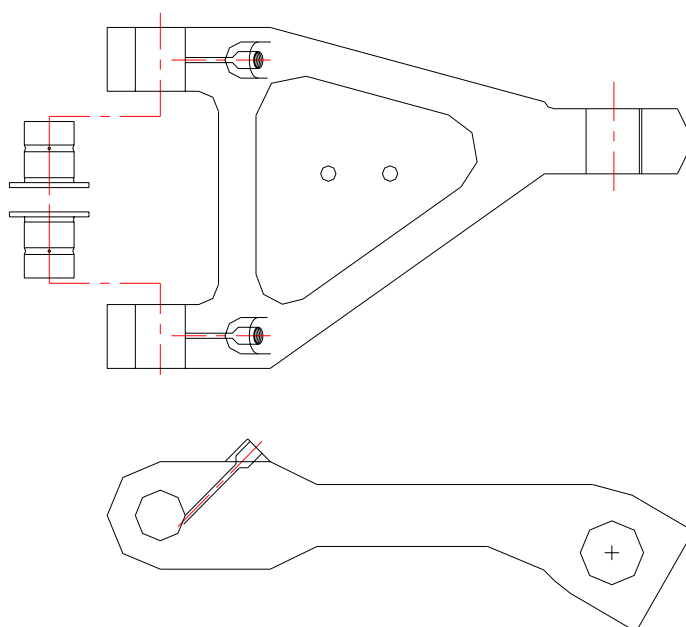
INSPECTION FEES APPLY



253511-1

253512-1

SCISSOR OVERHAUL SCISSOR, LOWER LH & UPPER RH SCISSOR, UPPER LH & LOWER RH



REPAIRS

OVERHAUL

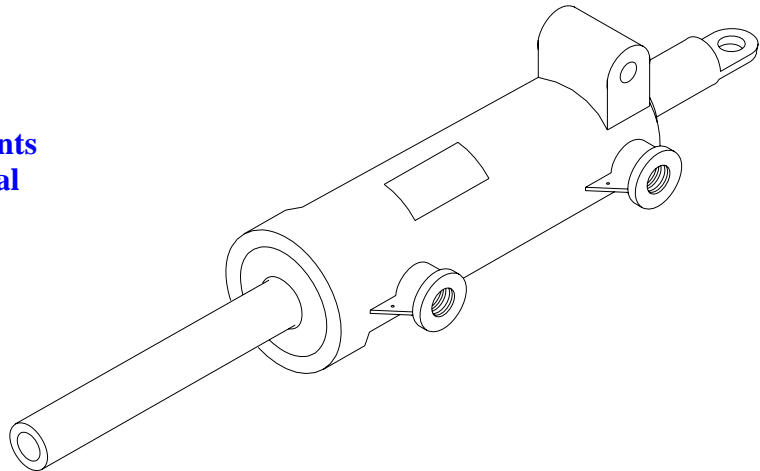
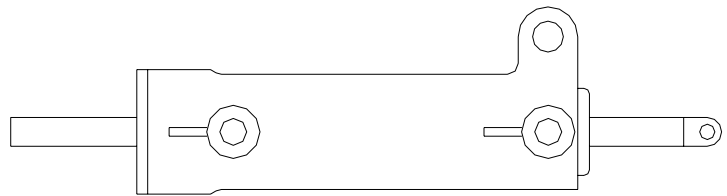
INSPECTION FEES APPLY



713096 Series 4713096 Series NOSE GEAR STEERING CYLINDER

OVERHAUL CONSISTS OF:

- Restoring main bore and shaft exit lands of housing to new dimensions, if necessary
- Restoring end plug shaft exit land, if necessary
- Restoring piston / shaft assembly to new dimensions if necessary
- Installing all new seals
- Testing to more stringent requirements than the aircraft maintenance manual
- Issue FAA form 8130-3 for the overhaul of the assembly



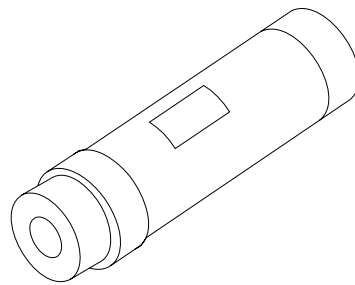
REPAIRS

OVERHAUL
EXCHANGE
CORE CHARGE

INSPECTION FEES APPLY



HYDRAULIC FUSE 713047A



REPAIRS

OVERHAUL

INSPECTION FEES APPLY



ADDITIONAL WESTWIND REPAIRS/ OVERHAULS

<u>Part Number</u>	<u>Description</u>	<u>Repair</u>
713001-501	Power Brake Valve Assembly	Repair/ Overhaul

**CALL FOR A COMPLETE LIST OF
WESTWIND CAPABILITIES
PH: (936) 494-1717
TOLL FREE: (877) 309-4100**